

20/00212/OUT

Outline planning application for the development of 8 dwellings (including affordable housing contribution) together with open space, access, parking, landscaping, drainage and associated works. All matters reserved save for means of access and layout.

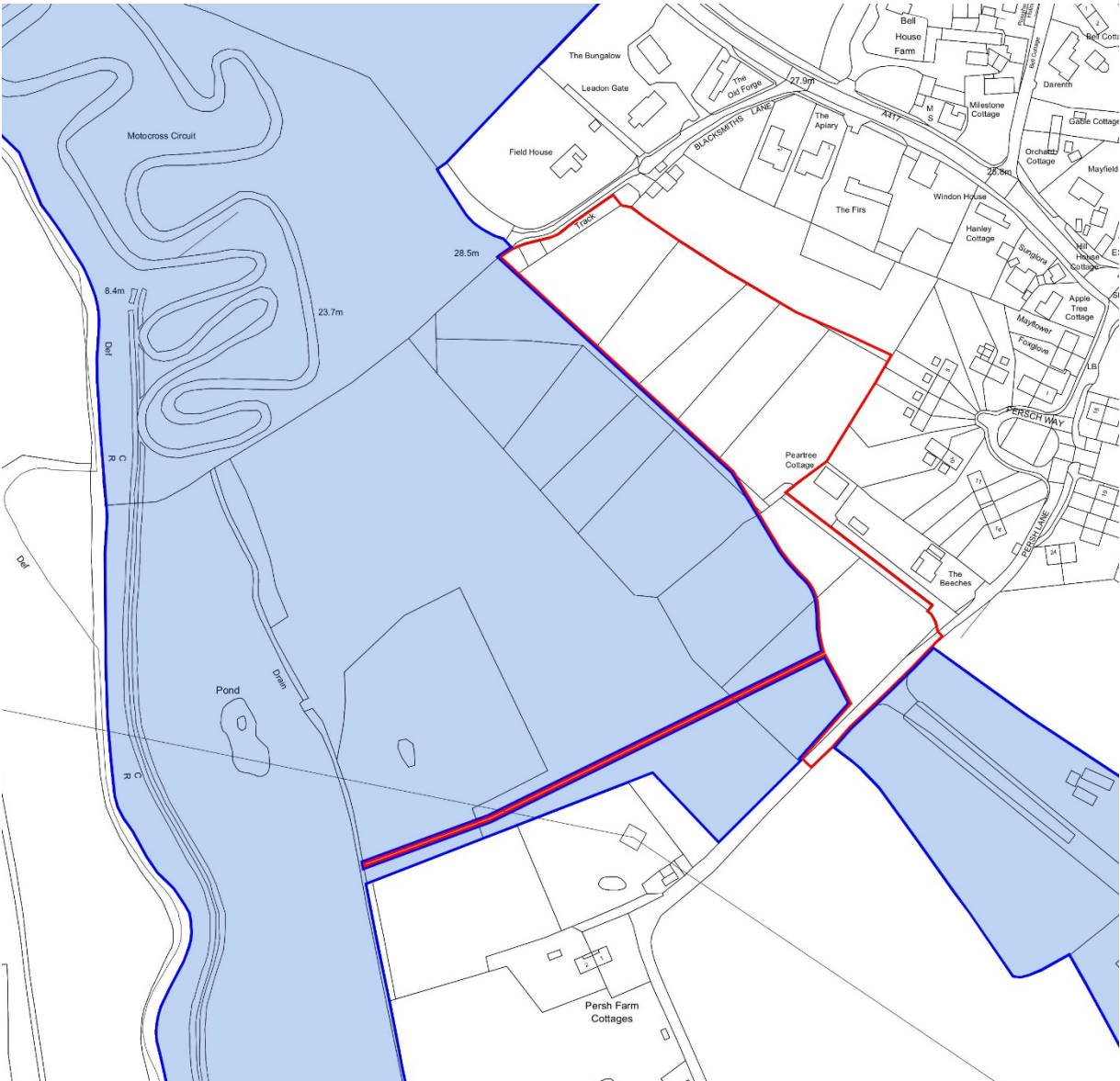
Land West of Persh Lane

Maisemore

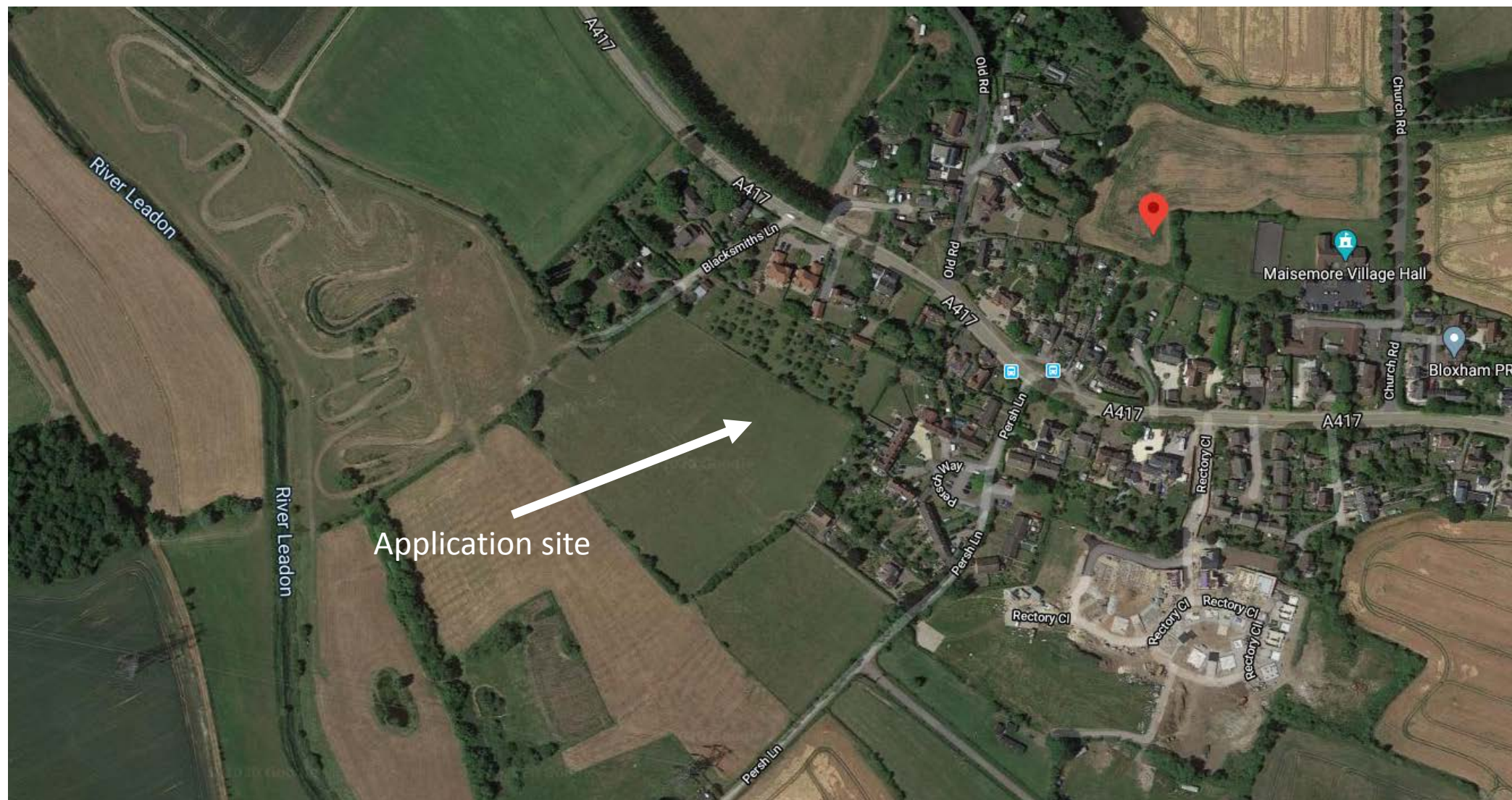
Gloucester

Gloucestershire

Location plan



## Aerial view

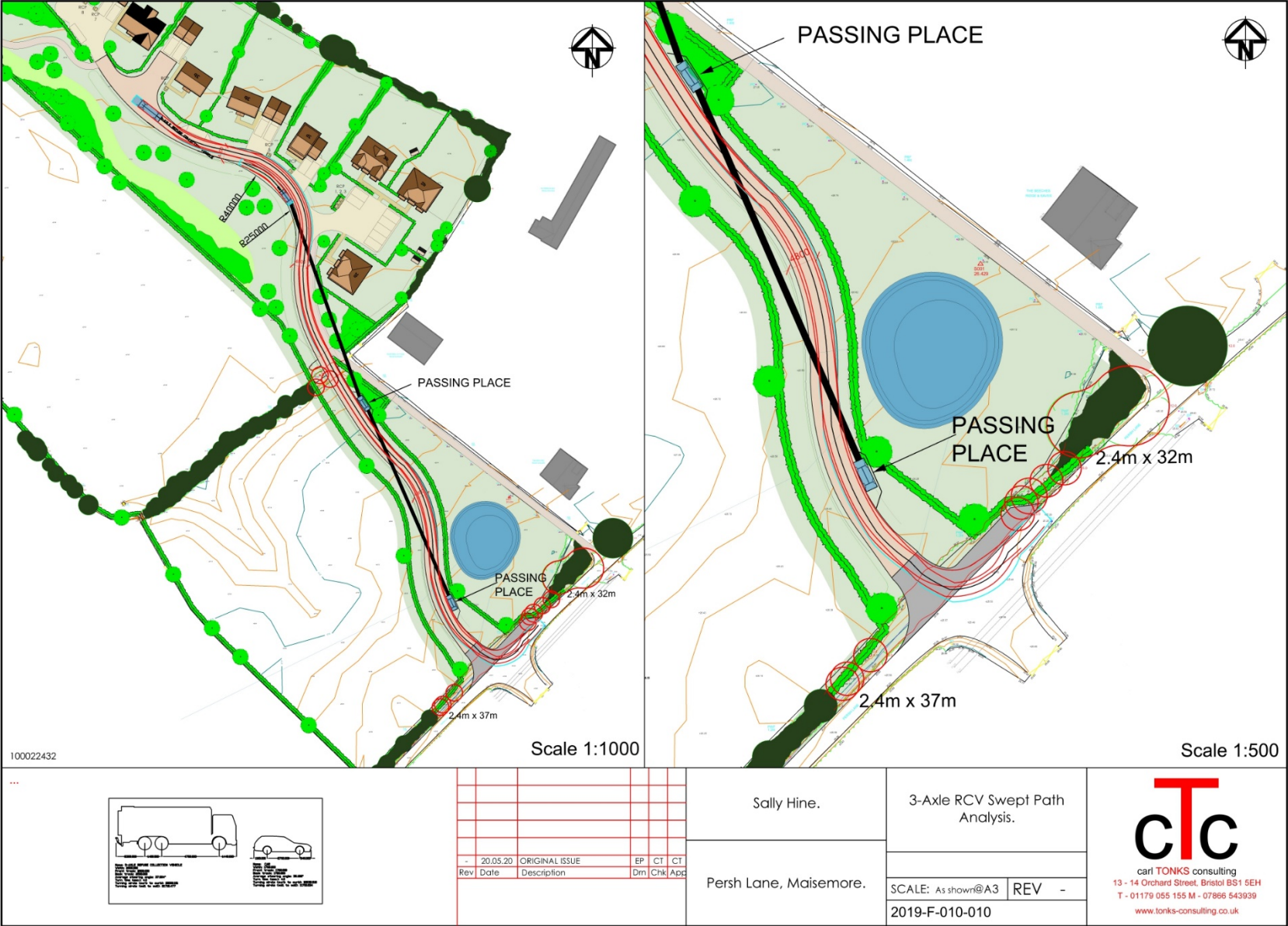




# Proposed layout



Proposed site access





## Photographs of site





## Photographs of site





## Photographs of site





## Photographs of site

